

## Citrix Remote Access Installation Instructions

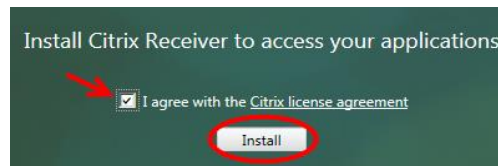
How to Access Meditech from Laptops & Desktop Computers  
(Including Mac Devices)

### Installation Instructions

1. Type the below web address into your computer or laptop's internet web browser:  
<https://patientcare.fresnosurgicalhospital.com>
2. Enter the User Name & Password previously given (if you do not have a login & password or receive an error message call the FSH Helpdesk at 559-447-7777)



3. Your laptop or computer will receive a prompt to Install Citrix Receiver, **click Install**



4. Then, at the bottom of the screen, **click RUN** to begin install



- At the Welcome to Citrix Receiver Setup screen **click Install**

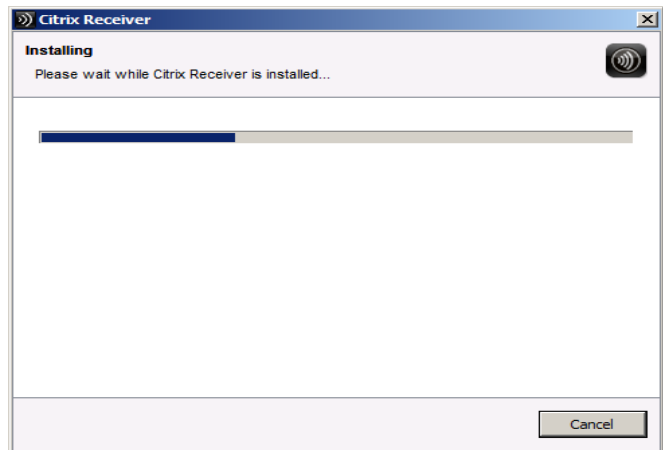


- At the bottom of the screen a prompt to allow Citrix Systems may display, **click Allow**

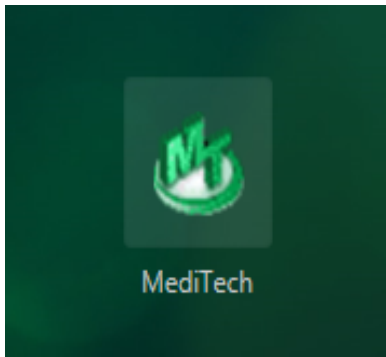
This webpage wants to run the following add-on: 'Citrix Systems, Inc' from 'Citrix Systems, Inc.'



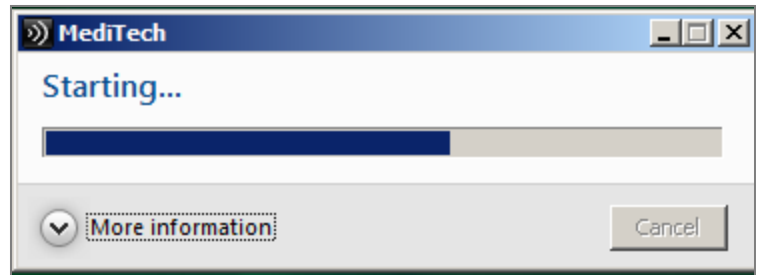
- Please wait while Citrix is being installed



8. The Citrix Receiver desktop will display with the Meditech Icon, double **click Meditech icon**



9. Meditech start up will begin



10. A security warning may display **click Permit use**



11. The installation process is now complete: **click the Meditech Icon** to begin use

